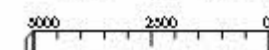
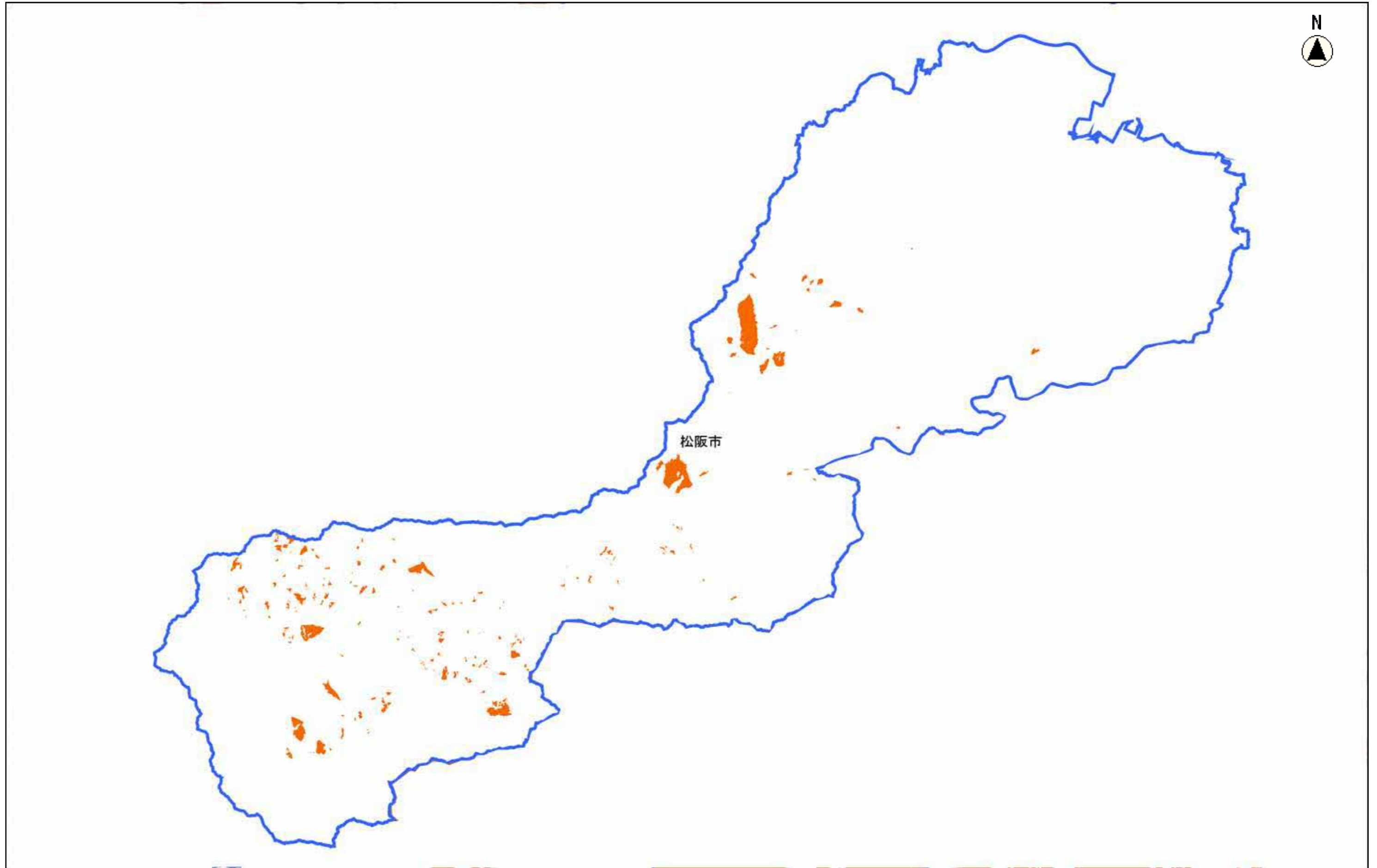


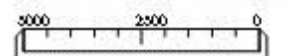
森林計画図は、県が森林資源の把握のために利用しているものであるため、現地において実測や確認を行ったものではなく、必ずしも正しく表示しているとは限りません。

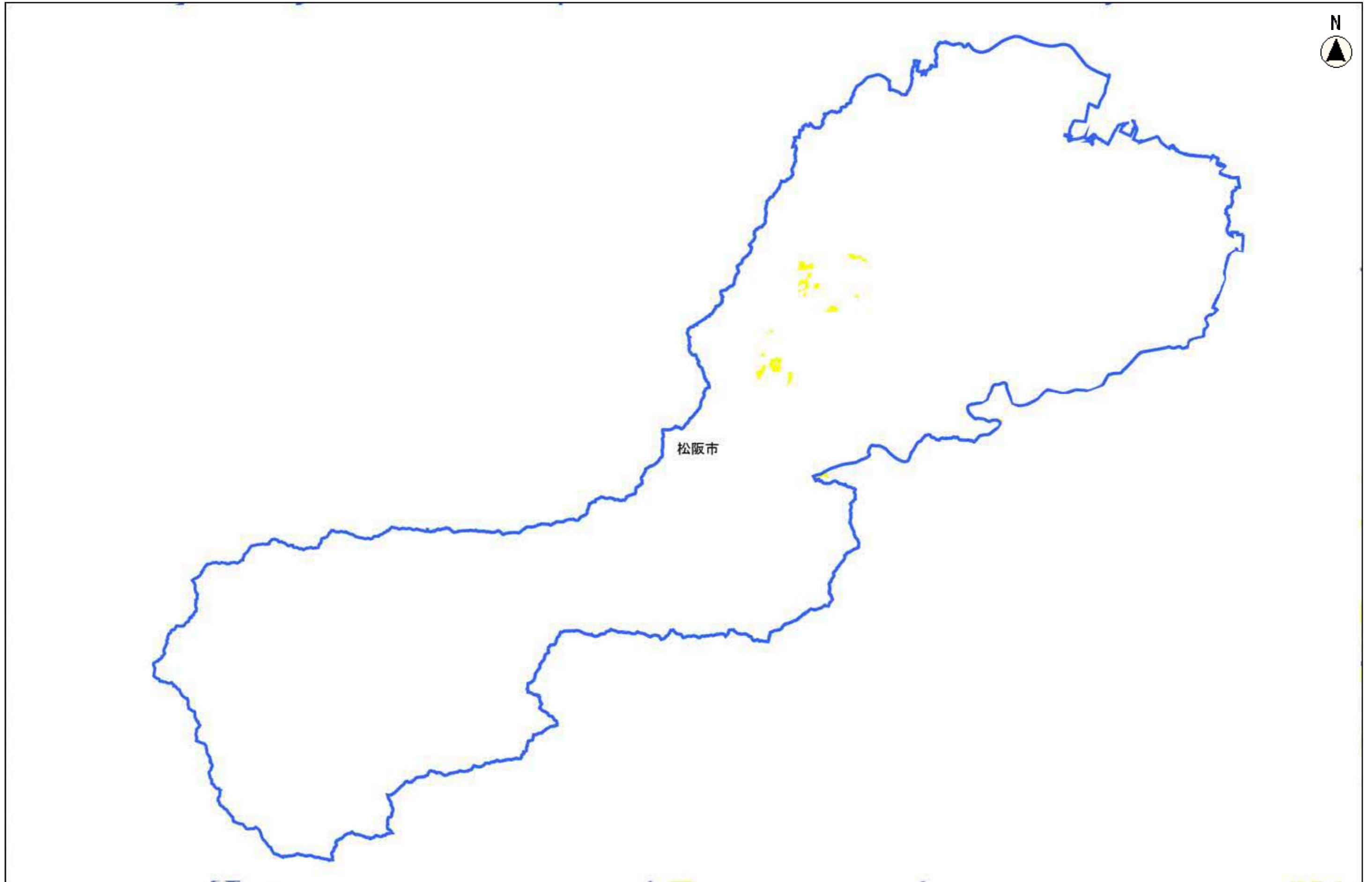
縮尺 1 : 160000



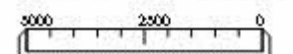


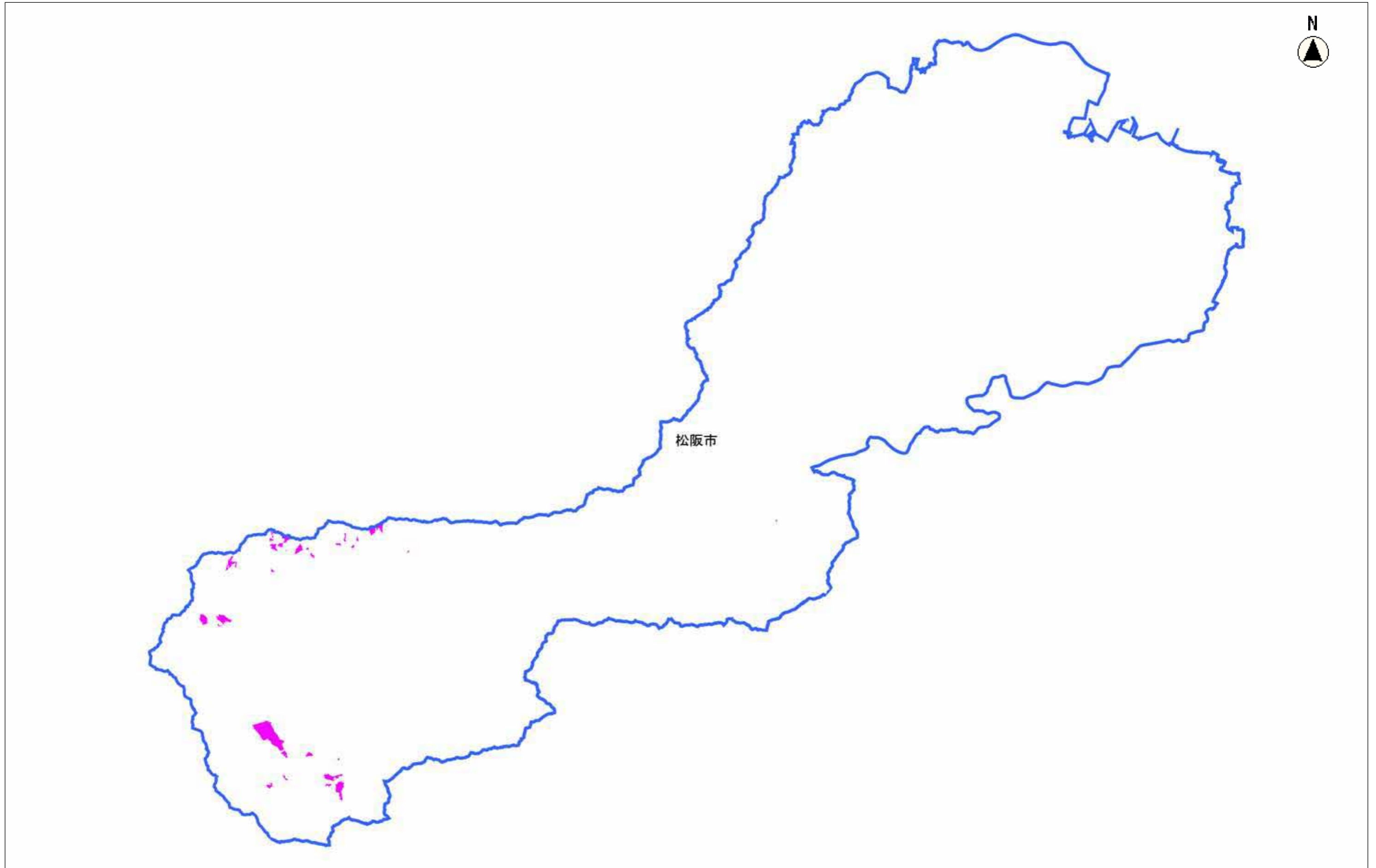
縮尺 1 : 160000





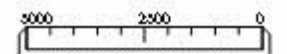
縮尺 1 : 160000

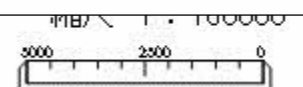
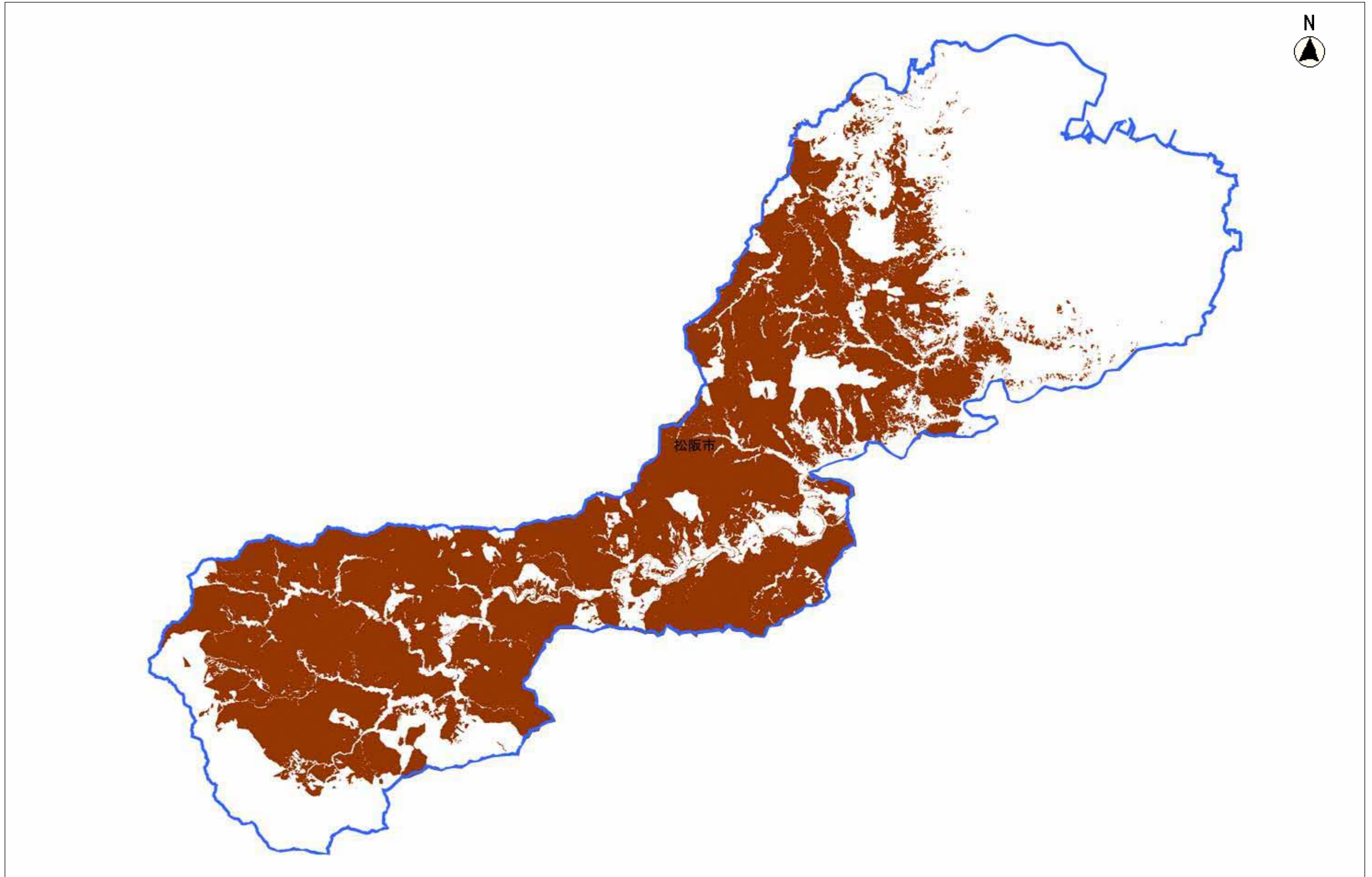


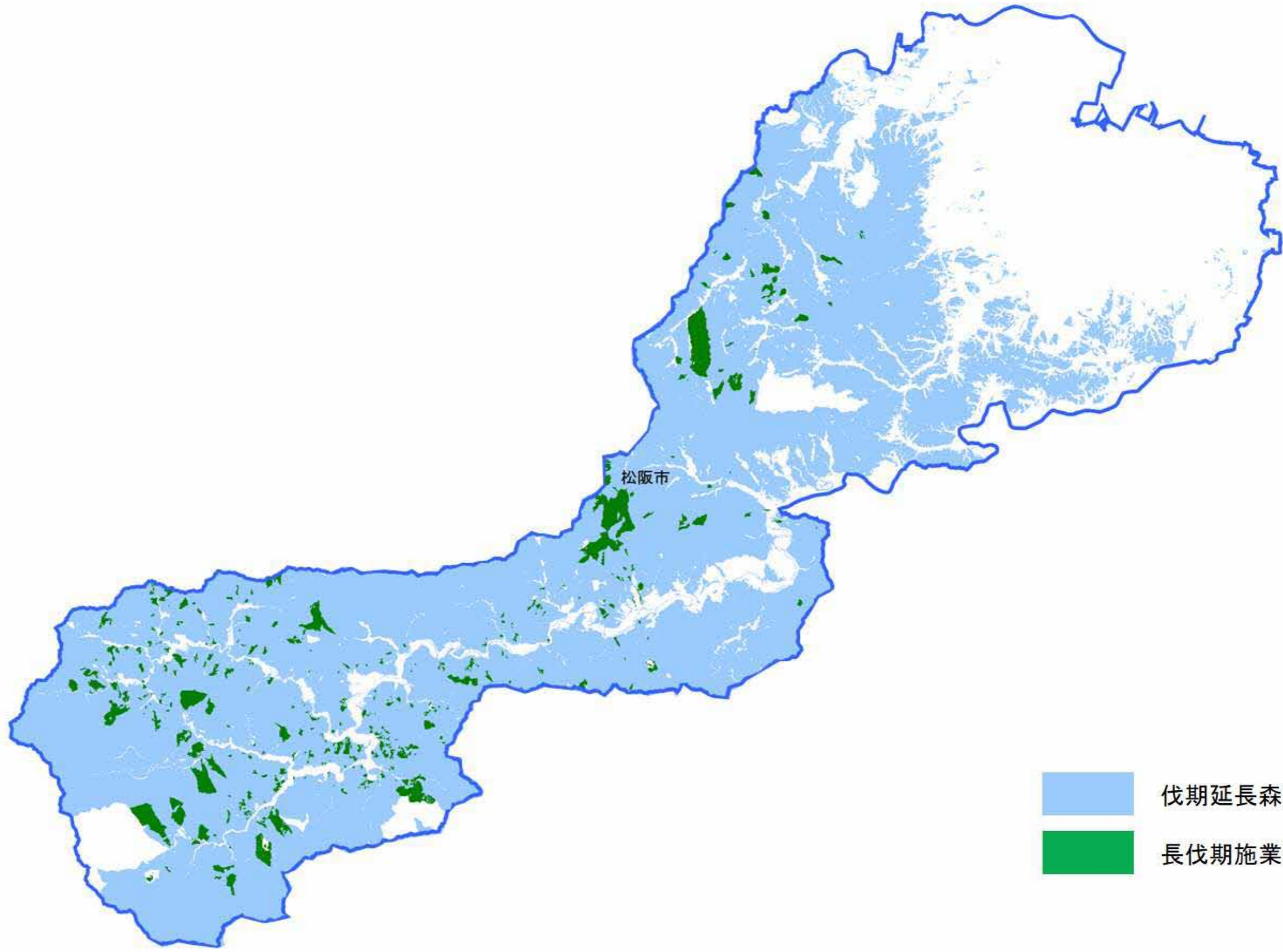




松阪市

縮尺 1 : 160000

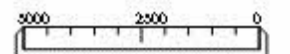


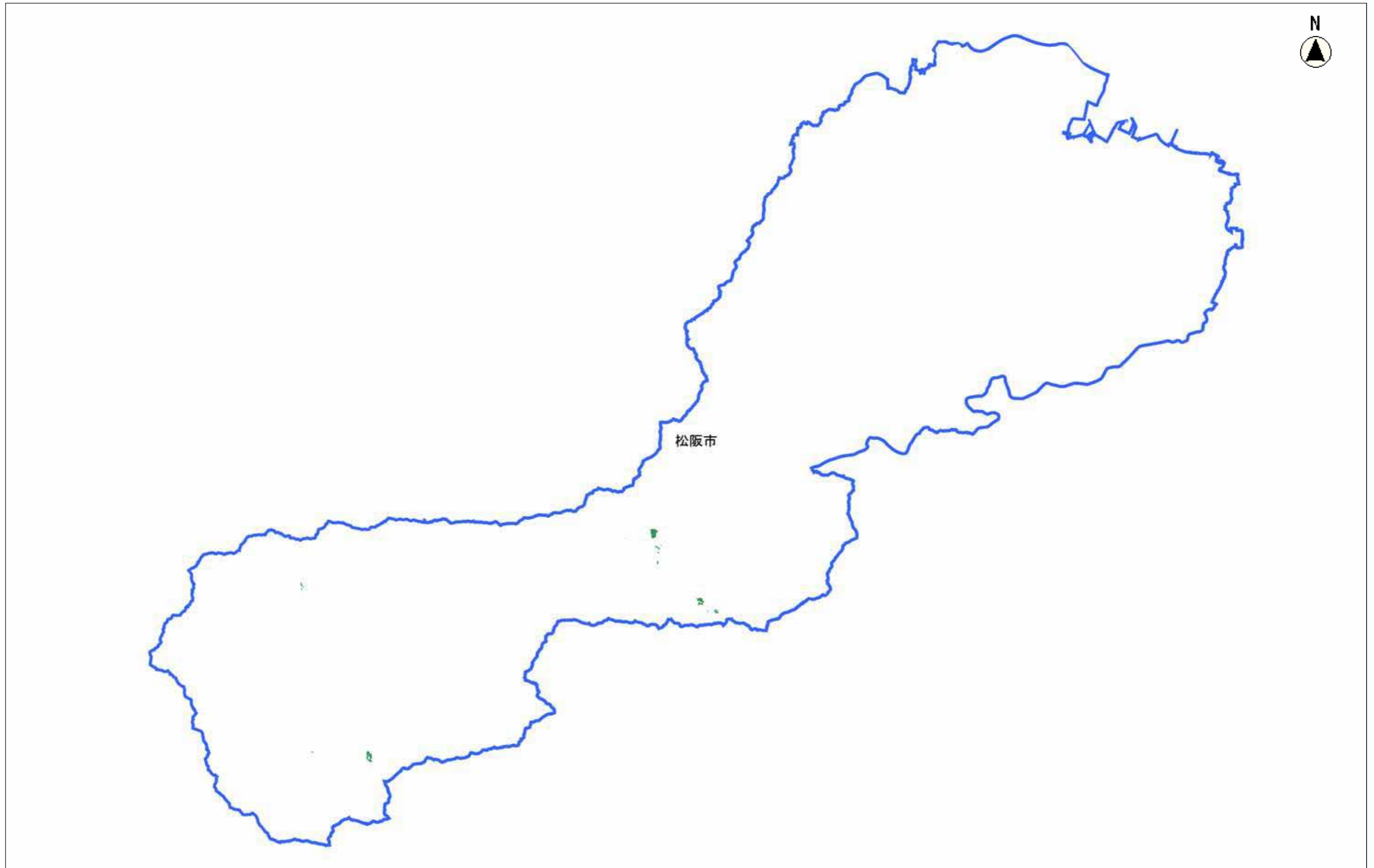




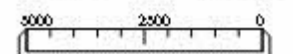
-  伐期延長森林
-  長伐期施業森林

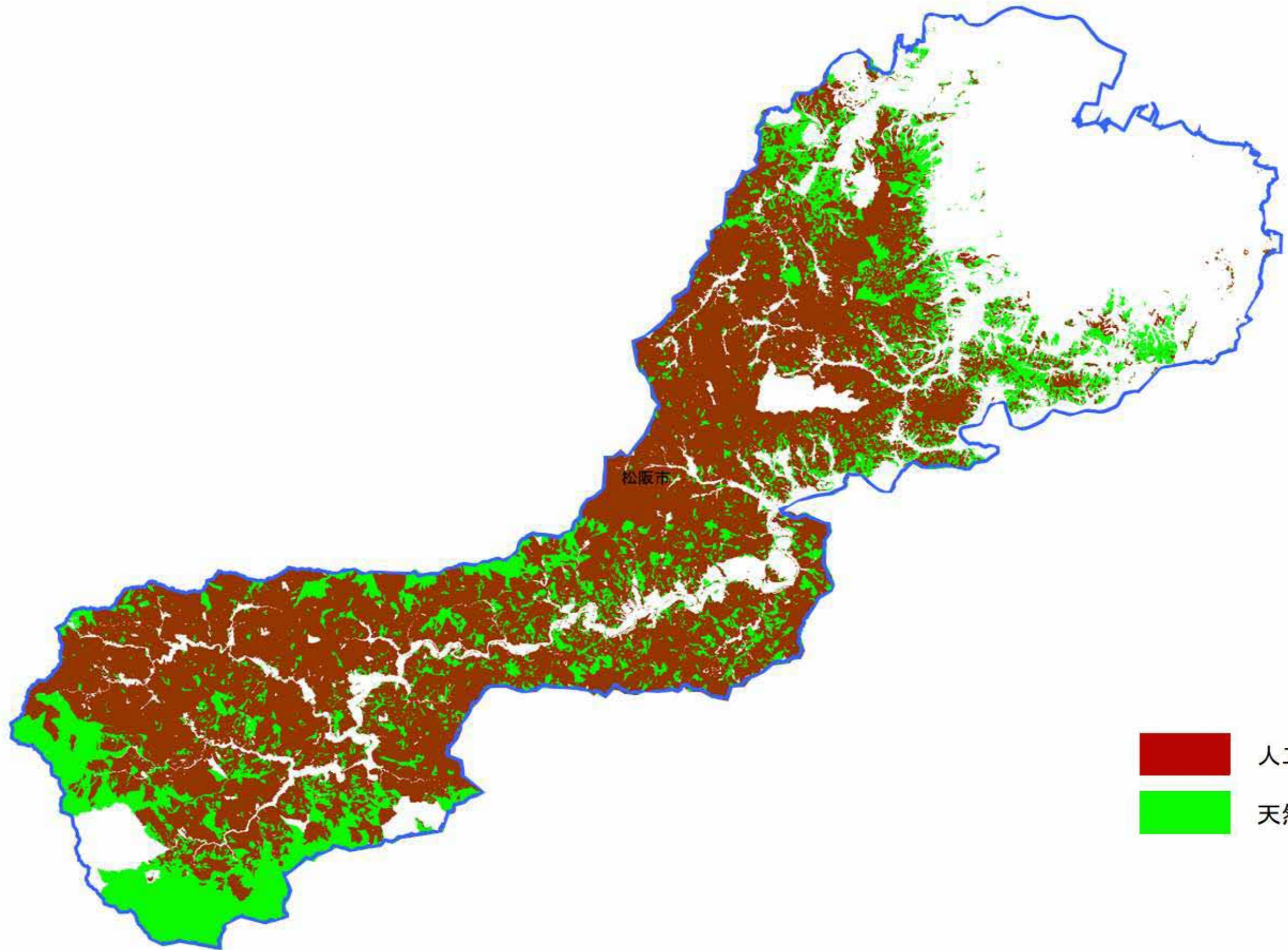
縮尺 1 : 160000



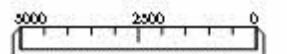


縮尺 1 : 160000

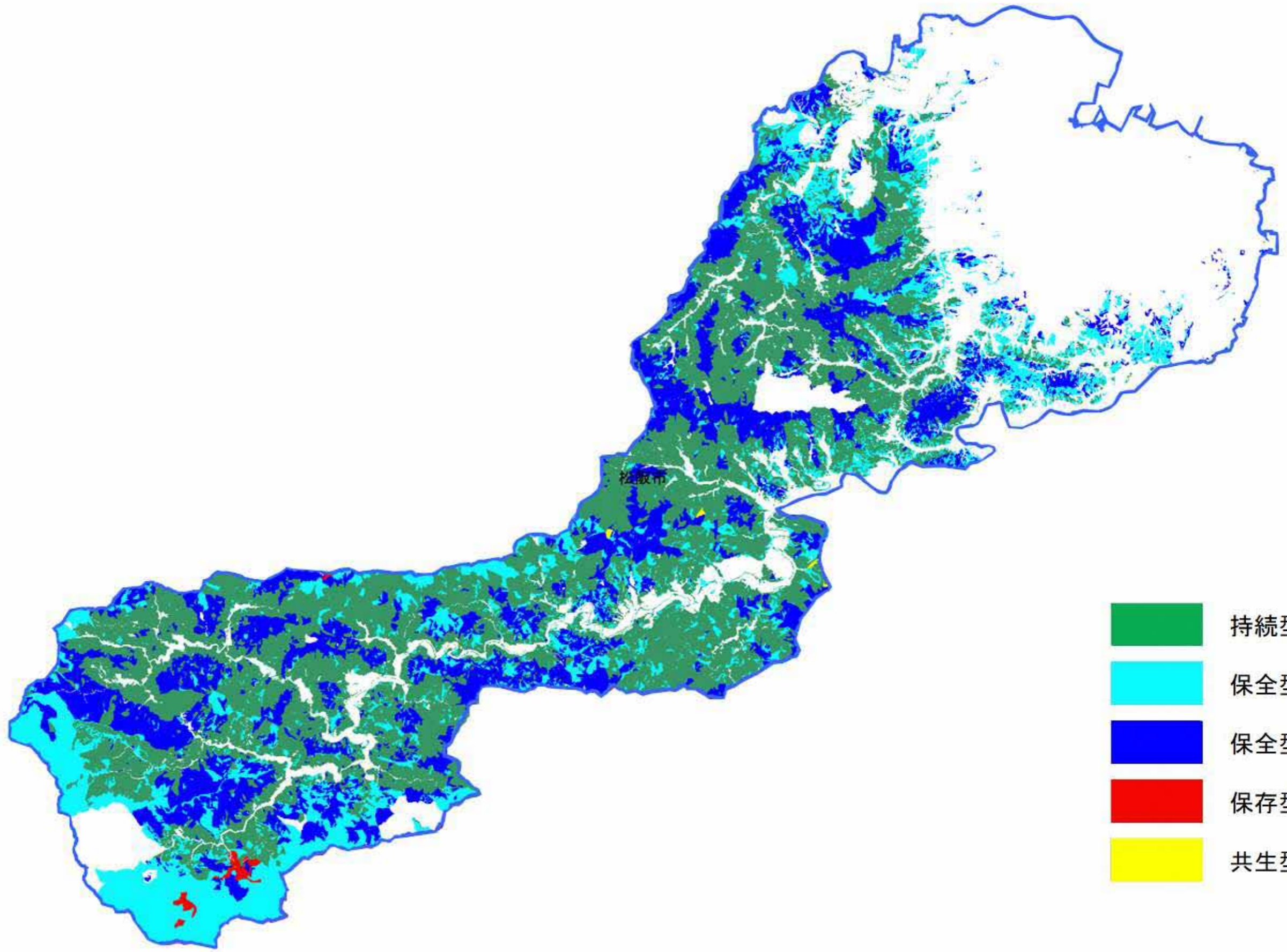









縮尺 1 : 160000







-  持続型
-  保全型 1
-  保全型 2
-  保存型
-  共生型

縮尺 1 : 160000

