

# How to dispose and separate your waste and recyclables

◎ Please ensure to separate waste and place at the designated location by 8:00 a.m. on the collection day.

Collection : Twice a week Place waste for disposal in the yellow semi-transparent bags designated by Matsusaka City.

## 可燃

### Burnable waste

- Kitchen waste  
Raw waste (food scraps, leftovers, etc)  
 Drain kitchen refuse.
- Paper that cannot be recycled  
Items still containing food and oil, etc.  
Used tissue paper  
Photographs
- Plastics without a recycling mark  
Applies to items that can fit in the designated garbage bags.  
Plastic toys (restricted to items that don't contain metal.) Plastic hangers
- Other  
Rubber and leather products Paper diapers (remove any waste before disposal.) Remove soil from leaves and grass, and place in garbage bags designated by Matsusaka City.
- Items that may be disposed of as burnable waste that do not go into designated garbage bags  
Futon, rugs  
Fold items that won't fit into the designated garbage bags to approx. 1 m in size and tie with a package knot.   
Pruned branches  
Cut pruned branches into a length of approx. 1 m and thickness of approx. 5 cm before binding with cord into bundles that can be carried in one hand.
- CDs, DVDs, BDs
- Curtains, Stuffed toys
- Toothbrushes, Wash bowls

## 不燃

### Non-burnable waste

Collection : Twice a month Place into a transparent or semi-transparent bag for disposal.

- Small metal waste  
Pots, Frying pans Steel cans (empty cans)
- Glass, Ceramics  
Bowls, Plates Pottery bowl Cups  
Bottles that cannot be recycled
- Home appliances  
Non-rechargeable appliances
- Blades  
When disposing of glass or blades, please wrap in thick paper and label "ガラス" or "ハモノ" for safety purposes.
- Bicycles  
Clearly label as waste. Remove batteries from electric assist bicycles. (Indicate that the battery has been removed) Take the battery back to the retailer.
- Gas Range, Stove heater Umbrella Light bulbs and LEDs

## プラ容

### Plastic containers and bags

Collection : Once a week Place into a transparent or semi-transparent bag for disposal.

Look for the plastic mark when separating plastic containers and bags. Ensure items are empty and wash away what is left until clean. Dry thoroughly after washing.

- Supermarket bags, snack food bags, etc.
  - Bento containers, food trays, etc.
  - Cup noodle and pudding containers, etc.
  - Shampoo, conditioner, etc.
  - Mayonnaise and toothpaste, etc.
  - Packing foam, natto containers, etc.
- If it cannot be cleaned, dispose of burnable waste.  
○ If there is a plastic mark, dispose of the item as recyclable regardless of whether the material is hard or soft.

## 資源

### Recyclables

Collection : Once a month Put in the basuket.

#### PET bottles

Look for the mark on the left. Lightly rinse the inside of bottles before disposal. Put out labels and caps with "plastic containers and bags".



#### White foam trays

White foam trays refer to white trays made of styrene foam. Colored trays and natto containers even though they are white, should be disposed of as "plastic containers and bags". Rinse and dry thoroughly.



#### Milk cartons

Wash the inside of milk cartons and cut them open. Once they are dry, bind them together using a package knot. Applies to milk cartons that hold 500 ml or more and juice cartons with a white lining.



#### Magazines and mixed paper

Place into a paper bag or bind with a package knot for disposal. Mixed paper includes candy boxes, tissue boxes, envelopes, post cards and copy paper.



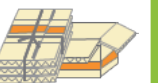
#### Aluminum food and beverage cans

Items marked with an aluminum can mark should be disposed of as recyclables. Lightly rinse the inside.



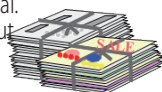
#### Cardboard boxes

Bind with a package knot for disposal. Applies to corrugated cardboard boxes as well. Remove anything that is not paper, including adhesive tape and metal.



#### Newspaper

Bind with a package knot for disposal. Advertisements and flyers can be put out together with newspaper.



#### Rechargeable small home appliances

Applies to electrical appliances that are charged before use. Small rechargeable batteries, including lithium-ion batteries have this mark.



#### Empty bottles

Empty bottles includes those used for beverages, food products and cosmetics. Lightly rinse the inside. Empty bottles can be used as recyclable material and are sorted by color and collected in specific bins. Separate empty bottles according to color : white, brown and other.

You can tell how to separate your empty bottles by looking at the color of the bottle opening.



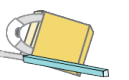
#### Old clothes

Place into a transparent or semi-transparent bag for disposal. Separate items that can be used as second-hand clothes. Wash clothes before disposal. Leave buttons and fasteners in place.



#### Fluorescent tubes

Please take measures to prevent breakage by placing used fluorescent tubes in their original box or a separate bag. Mercury thermometers, mercury temperature gauges and mercury blood pressure monitors. These containing mercury can be put out together with fluorescent tubes.



#### Hazardous waste

Separate spray cans, lighters and batteries before disposal. You do not need to put holes in the cans. Cans pose a fire hazard. Ensure cans are empty before disposal.

- Spray cans • Cassette gas cannisters
- Lighters
- Batteries

### Items that cannot be collected or disposed of by the city

- Chemicals and agrochemicals
- Tires
- Fire extinguishers
- Liquids, including waste oil
- Cars, motorbikes, agricultural equipment or parts
- Gas cylinders
- Batteries
- Gunpowder
- Pianos
- Any other industrial waste generated through business activities

### How to dispose of old personal computers

- Take to the Matsusaka Recycle Center or Matsusaka Clean Center
- Use the home collection service (free) provided by Renet Japan Recycle, Inc.
- Return to computer manufacturer



### Recycling home appliances

Air conditioners, televisions, refrigerators, freezers, washing machines and clothes dryers are all recyclable home appliances and are not collected by the city. These appliances are collected by the retailer or manufacturer for recycling.

#### How to recycle your home appliances

- When requesting disposal from an appliance retailer → Recycling fee + Transportation fee
- When taking items directly to the designated handling location → (Prepaid) recycling ticket only
- When taking to the Matsusaka Clean Center → (Prepaid) recycling ticket + Municipal disposal fee

