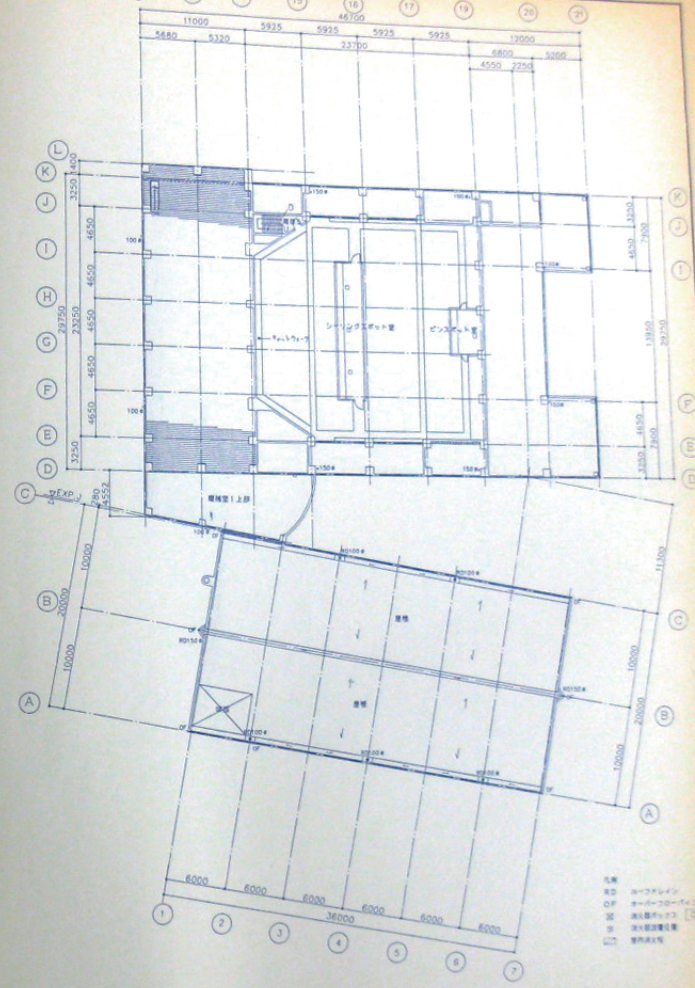
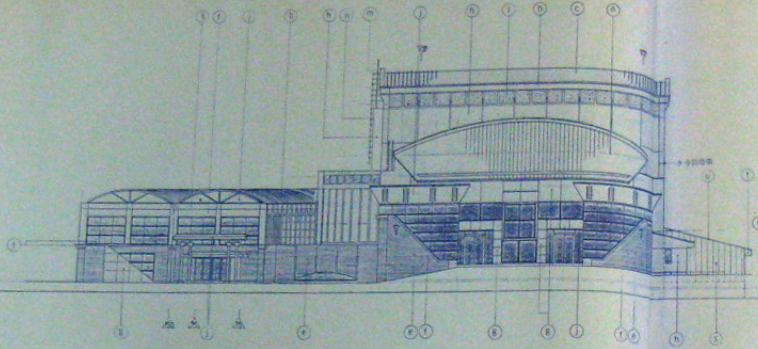


2階平面図 S=1:200

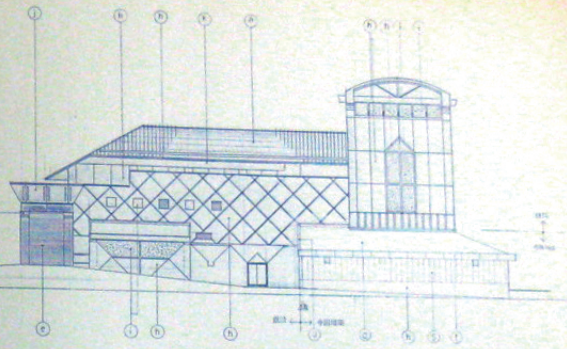


1階平面図 S=1:200

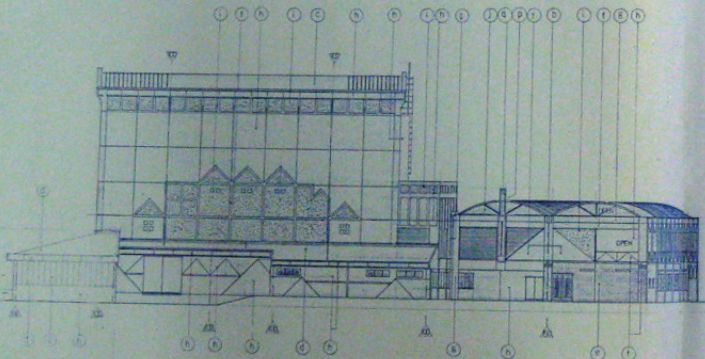
- 柱
- 梁
- △ 窓
- ▽ 扉
- ◇ 階段
- 設備



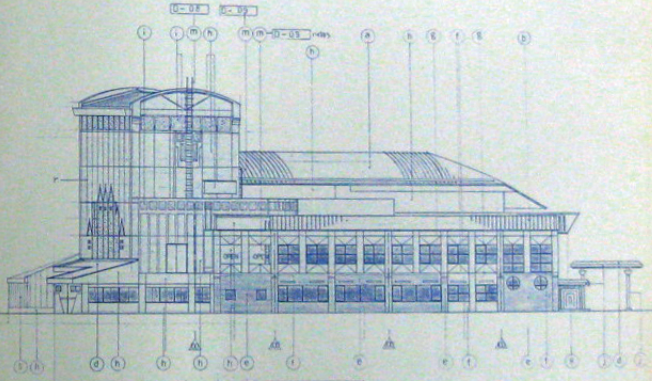
圖四 剖面圖 1:200



圖五 剖面圖 1:200



圖六 剖面圖 1:200



圖七 剖面圖 1:200

(a)	樓板 200x200 鋼筋 12 200x200 鋼筋	(k)	ASB 板 100x 400x C	(A)	鋼筋 10 (100x100) 鋼筋 10
(b)	300x300 鋼筋 12 400x400 鋼筋	(l)	100x100 鋼筋	(B)	鋼筋 10 (100x100) 鋼筋 10
(c)	300x300 鋼筋 12 400x400 鋼筋	(m)	100x100 鋼筋	(C)	鋼筋 10 (100x100) 鋼筋 10
(d)	175x175 鋼筋 12 400x400 鋼筋	(n)	100x100 鋼筋	(D)	鋼筋 10 (100x100) 鋼筋 10
(e)	400x400 鋼筋	(o)	100x100 鋼筋	(E)	鋼筋 10 (100x100) 鋼筋 10
(f)	C100 鋼筋 A	(p)	100x100 鋼筋	(F)	鋼筋 10 (100x100) 鋼筋 10
(g)	C100 鋼筋 B	(q)	100x100 鋼筋	(G)	鋼筋 10 (100x100) 鋼筋 10
(h)	C100 鋼筋 C	(r)	100x100 鋼筋	(H)	鋼筋 10 (100x100) 鋼筋 10
(i)	C100 鋼筋 D	(s)	100x100 鋼筋	(I)	鋼筋 10 (100x100) 鋼筋 10
(j)	175x175 鋼筋	(t)	100x100 鋼筋	(J)	鋼筋 10 (100x100) 鋼筋 10